



Standalone Photoelectric
Smoke Alarm



ZR150S

User Manual

Chongqing Zorro Alert Technology Co.,Ltd.

Contents

| | |
|----------------------------------|----|
| 1. Product Description..... | 2 |
| 2. Product Features..... | 2 |
| 3. Technical Parameters..... | 3 |
| 4. Product Size and Installation | |
| 4.1 Product size..... | 4 |
| 4.2 Installation Method..... | 5 |
| 5. Indicator States Instruction | |
| 5.1 Normal Operating State..... | 7 |
| 5.2 Alarming State..... | 7 |
| 5.3 Testing State..... | 8 |
| 5.4 Low Power Failure State..... | 8 |
| 5.5 Device Failure State..... | 8 |
| 5.6 Hush State..... | 8 |
| 6. Trouble Shooting..... | 8 |
| 7. Care and maintenance..... | 9 |
| 8. Battery Replacement..... | 10 |
| 9. Contact us..... | 11 |

- 1 -

Thanks for choosing ZR150S household standalone photoelectric smoke alarm. In order to ensure your personal and system safety and realize the best product performance, please read this manual carefully and completely before installing, using or repairing this device, and the Warnings and Notes in this manual should be paid special attention to.

1.Product Description

The ZR150S household standalone photoelectric smoke alarm (alarm) detects fire by sensing smoke. When smoke in the room reaches a certain concentration, the alarm will send out sound and light warning alarm. This alarm is applicable for residential houses. Standard implemented: EN 14604:2005+AC:2008

2.Product Features

- Single light source detection, free from false alarm due to dusts, insects and moisture.
- Professional maze design, quick sense of fire.
- Low power consumption, ultra-long standby time, 10-year service life.
- Fire-retardant plastic case with glossy surface treatment.
- Dismantle-free cover design for cleaning.
- Blind twist design +3M double-sided glue quick installation.

- 2 -

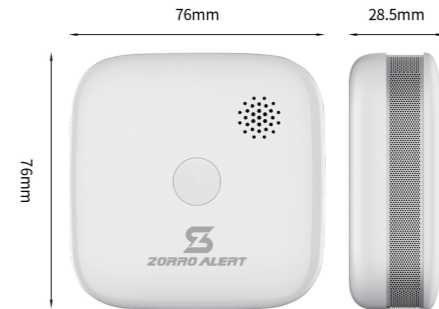
3.Technical Parameters

| | |
|---------------------------|--------------------------------------|
| Model | ZR150S |
| Operating Voltage | DC 3V (CR123A) |
| Battery Capacity | 1400mAh |
| Average Quiescent Current | <9uA |
| Alarming Mode | Sound + light |
| Alarming Sound Level | ≥85dB (at 3m) |
| Operating Humidity | ≤95%RH (non-condensation) |
| Battery Life | 10 years (typical value) |
| Operating Temperature | -10°C~55°C |
| Installation | Ceiling-mounted (screwing or 3M gum) |
| Size (L*W*H) | 76mm*76mm*28.5mm |
| Standard | EN 14604:2005+AC:2008 |

- 3 -

4.Product Size and Installation

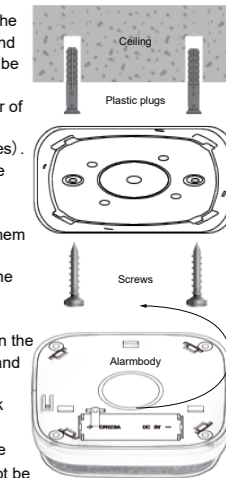
4.1 Product size



- 4 -

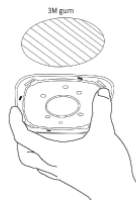
4.2 Installation method

- Place the mounting plate on the desired installation location and mark where the holes should be drilled.
- Drill two holes with a diameter of 4 millimetres. (The distance between them is 42 millimetres).
- Push the plastic plugs into the holes.
- Insert the screws into the mounting plate, and tighten them firmly into the plugs.
- Fasten the smoke alarm on the mounting plate by twisting clockwise.
- Fasten the smoke alarm when the holes on the mounting plate and smoke alarm are aligned.
- Press the test button to check whether the smoke alarm operation normally, the smoke alarm is abnormal and can not be used if no sound.
- Plastic plugs size:M4*20
- Screw size:M2.6*16

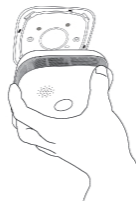


- 5 -

1. 3M gum to fix the mounting plate onto the ceiling.



2. Mount the alarm onto the mounting plate.



3. Twist clockwise the alarm to lock the alarm onto the mounting plate.



Notes:

- The smoke alarm should be installed in the middle of the room ceiling;
- The smoke alarm should only be installed indoor and at least one alarm in each room;
- The smoke alarm should be at least 150cm away from lights, exhaust fan, air conditioner and air inlet/outlet;
- Do not install the alarm in bathroom or those places with water drops;
- Do not install the alarm in areas with non-fire smoke.

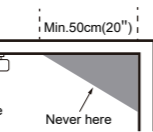
5.Indicator States Instruction

5.1 Normal Operating State

Under normal operating state, the red indicator flashes one time per 40 seconds.

5.2 Alarming State

When smoke concentration reaches alarming point, the red indicator flashes consecutively and the alarm sends out beeping alarm.



5.3 Testing State

Short-pressing the test button, the red indicator will flash consecutively, the alarm will send out three beeping sound, a period later, it will automatically stop.

5.4 Low Power Failure State

Under low power failure state, the red indicator flash once per 40 seconds, at the same time, the alarm will beep once.

5.5 Device Failure State

The red indicator flashes twice per 40 seconds, and the alarm beeps twice per 40 seconds.

5.6 Hush State

When the alarm is at alarming state, users can short-press the test button to make the alarm enter hush state, then the alarm will not send out sound alarm, 9 minutes later, if the smoke concentration is still above the alarming point, the alarm will start to send out sound and light alarm again.

Notes: The hush state will not mitigate the fire risk. When any alarm is initiated, please do check your house for any potential fire risk.

6.Trouble Shooting

| Failure | Possible Reason(s) | Measure(s) |
|---------------------------------|-----------------------|---|
| Alarm immediately upon power on | A lot of smoke indoor | Power on the device again after smoke removed |

| | | |
|--|-------------------------------|---|
| Alarm immediately upon power on | Internal circuit damaged | Return the device for repair |
| Beep one time per 40s after powered on | Low battery voltage | Replace one battery of same model |
| Beep twice per 40s after powered on | Internal circuit damaged | Return the device for repair |
| No alarm when testing | Battery installed incorrectly | Check and install the battery again (pay attention to polarity) |
| | Low battery voltage | Replace one battery of same model |
| | Internal circuit damaged | Return the device for repair |
| No sound or low sound of buzzer | Low battery voltage | Replace one battery of same model |
| | Buzzer misplaced | Return the device for repair |

7.Care and maintenance

- 1.After the alarm is installed and put into use, press the test button to test the detector every week .
- 2.Clear smoke alarms: clean the smoke alarms at least once a year to keep them clean from the accumulated dust.

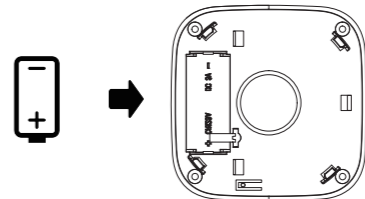
Caution:

Please do not smear your smoke alarm with paint, coating etc, which may obstruct the smoke inlet to affect the alarm work normally.

Do not use solvents or detergents to clean your smoke alarm. The solvents or detergents permeate the alarm may lead to sensor mishaps or circuit damage, can clean with cotton cloth or sponge.

8.Battery Replacement

When the alarm displays the battery low-voltage fault, please replace the battery of same model in time, press the test button after replacing the battery, the alarm will send out the sound and light for the successful replacement.



1. Detach the smoke alarm from the mounting plate by twisting counterclockwise.
2. Replace the battery with an new battery, please match the correct polarity marking.
3. Press the button to test the alarm, then lock the alarm onto the mounting plate by twisting clockwise.

9.Contact us

Thanks for choosing our smoke alarm. This smoke alarm is under our company warranty. For any quality issue or device failure, please contact us. We are dedicated in providing excellent service and quick response!

Level 4, Building 5, No.16, Shigui Road, Jieshi Town, Ba'nan District, Chongqing, 401346 P.R.China

Tel: +86-28-64745950

E-mail: info@zorroalert.com

Web: www.zorroalert.com