

ED100



991d/01



0832
0832-CPR-F1150

EN 54-7
EN 54-17

ANALOGUE ADDRESSABLE OPTICAL SMOKE DETECTOR



ED100 detectors come from the **ENE A** series of the Inim Electronics.

Each device from the ENE A series is identified by a unique factory-assigned serial number. Therefore, these devices do not require the use of an address programmer. The serial number is located on the device label and on two stickers which can be positioned on the system layout and on the mounting base.

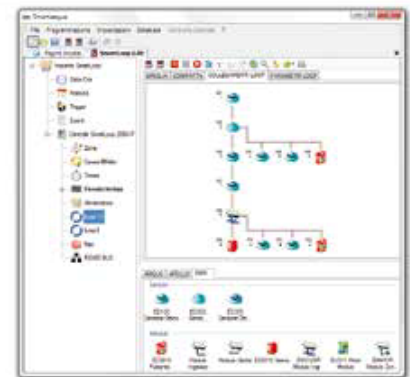
Once the loop wiring is complete, a manual programmer or a control panel via the **LoopMap** application, enrolls all the connected devices automatically and reconstructs a map indicating the wiring order of the connected devices, "T" junctions and all the physical characteristics of the Loop. LoopMap technology allows you reconstruct the exact installation layout and thus create an easy-to-use, interactive loop map which greatly simplifies and speeds up searches relating to system faults and maintenance work.

The serial self-addressing function, developed by Inim's R&D professionals, allows you to add new devices to an existing system without reprogramming it. In this way, the **LoopMap** specifications remain unchanged and the new devices are assigned available logical addresses (in order) and correctly positioned on the interactive map. The self-addressing function also eliminates many of the problems connected with the manual addressing procedure, such as time-consuming operations on rotary/DIP switches and errors caused by duplicated or wrong addresses and similar problems.

Versa++ technology allows these detectors to be configured in accordance with the required detection method. This allows the detectors to adapt perfectly to external conditions and provide prompt, effective detection of events.

The following parameters are available:

- Operating mode selection (flashing on LED, flashing on remote indicator)
- Optical chamber sensitivity adjustment
- Manual activation of the LED
- Fault report enquiry
- Complete diagnostics



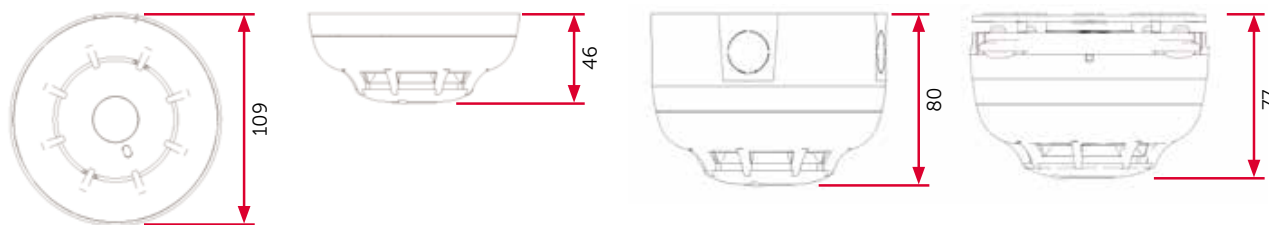
MAIN FEATURES

- 500 µm hole-diameter mesh insect screen
- Tricolour LED: red for alarm; green flash (optional) for identification after manual activation from the control panel; yellow for trouble (fault or high level of contamination in the optical smoke chamber)
- Built-in short-circuit isolator on each device
- Up to 240 devices connectable to the loop
- LoopMap Technology
- Versa++ Technology
- "WARNING" signal with programmable thresholds and operating mode
- Different SMOKE sensitivity for day and night mode
- Self-addressing (each device is identified by a factory-assigned serial number)
- "Interrupt" function: allows detectors to engage the control panel and communicate alarm or fault conditions instantly.
- Supervised remote output configurable from the control panel
- Automatic recognition of remote signaller connection
- Drift compensation for sensor drift caused by dust in the chamber
- 4 different smoke detection thresholds
- Complete diagnostics, contamination level reading and values measured in real-time
- Non-resettable alarm counter
- Memory of the smoke and temperature levels measured in the five-minute period prior to the last alarm
- Setting options via manual programmer or via software

TECHNICAL SPECIFICATIONS

- Certification: LPCB CPR EN54/pt7-pt17 n. 0832-CPR-F1150
- Detection principle: light diffusion (Tyndall effect)
- Alarm transmission type: polling independent
- Identification of contamination or fault on detector
- Sampling: every 4 seconds
- Power voltage: 19-30Vdc
- Current draw during standby: 200µA
- Current draw during alarm: max10mA
- Sensitivity: 0.08 – 0.10 – 0.12 – 0.15 dB/m
- Operating temperature: from -5°C to +40°C
- Degree of protection: IP43
- Base fitting: bayonet coupling
- Height with EB0010 base: 46 mm
- Height with EB0030 deep base: 80mm
- Height with ESB10xx sounder base: 77mm
- Diameter: 109mm
- Weight (base included)

DIMENSIONS



WIRING DIAGRAMS TABLES

ITD001 Enea Detectors Wiring Diagram
ITD003 Enea Detectors Wiring Diagram
ITI004 Enea and Iris Detectors Installation

ITD007 ESB010 Sounder Base Wiring diagram
ITD008 ESB020 Sounder Beacon Base Wiring diagram
ITD009 EB020 Relay Base Wiring diagram

ORDER CODES

ED100 Analogue addressable smoke detector
ED200 Analogue addressable heat detector
ED300 Analogue addressable smoke and heat detector
IL100 Remote indicator
ESB10X0 Analogue addressable bases with audible/visual signalling
ISB10X0 Non-addressable bases with audible/visual signalling

EB0010 Mounting base for ENEA and IRIS detectors
EB0020 Relay base for ENEA and IRIS detectors
EB0030 Deep base
EB0040 Base protected against dripping water
EB0050 Spacer for EB0010 mounting base
EB0060 Base with integrate buzzer